

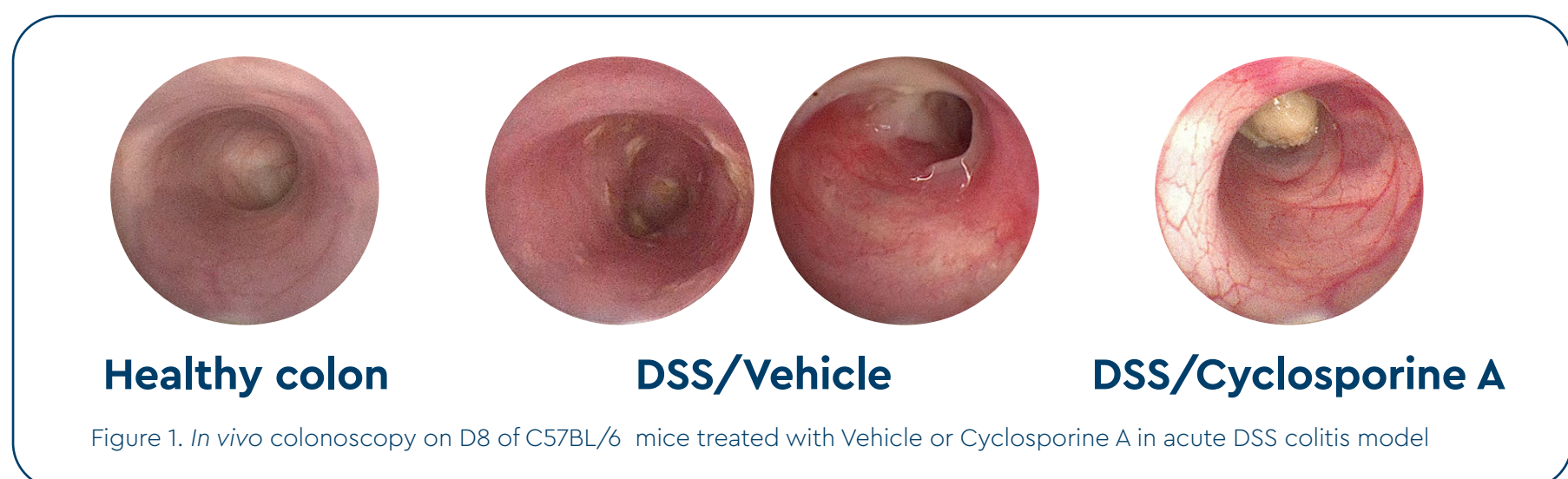
# Colonoscopy monitoring and colonoscopic-guided biopsy sampling

in *in vivo* inflammatory bowel disease (IBD) models



## We offer:

- Recurrent colonoscopy examination (daily or custom defined) for *in vivo* monitoring of intestinal inflammation progress and drug efficacy in several rodent IBD models



## You can expect:

- Generation of high-quality data relevant to human disease
- We use modified endoscopic score systems of colitis relevant for each IBD model for optimal grading of colon pathology and drug efficacy

## Colonoscopy monitoring can be performed in:

- Acute or chronic DSS-induced colitis in mice/rats
- Acute DSS-induced colitis with recovery in mice
- TNBS-induced colitis in rats
- CD4+CD25-CD62L+ T-cell transfer model of chronic colitis in C.B-17 SCID mice

## In addition:

- Colonoscopic-guided pinch biopsy in mice/rats can be collected for:
  - ▶ Histology
  - ▶ Gene expression analyses
  - ▶ Protein analyses
  - ▶ *In vivo* wound healing evaluation by wound area morphometry

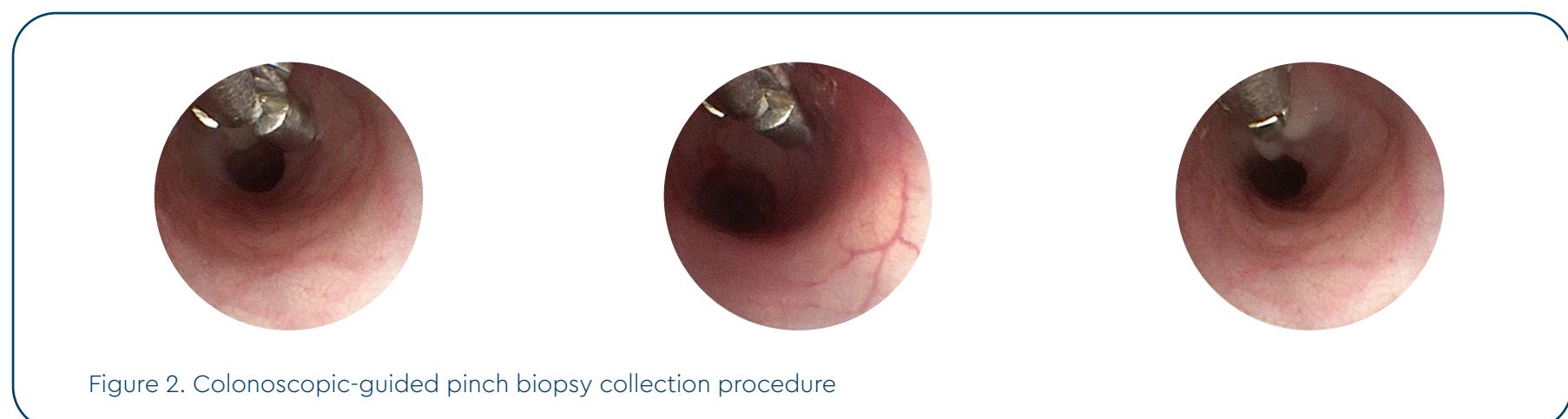


Figure 2. Colonoscopic-guided pinch biopsy collection procedure

- *In vivo* procedures are performed in AAALAC-I accredited State-of-the-Art animal facility (BSL2)
  - ▶ Competent and skilled doctors of veterinary medicine, veterinary technicians and hygiene personnel holding training certificates equivalent to FELASA, categories A to D
- *In vivo* pharmacology team supports diverse drug discovery projects, fully integrated with other preclinical disciplines
  - ▶ Individual efficacy studies or tailored *in vivo* pharmacology packages can be provided to cover specific client needs

## Contact us